



COOPER SINGLE HOLE FAUCET INSTALLATION

BEFORE YOU BEGIN

We recommend consulting a professional if you are unfamiliar with installing plumbing fixtures. Signature Hardware accepts no liability for any damage to the faucet, plumbing, sink, counter top, floor, or for personal injury during installation.

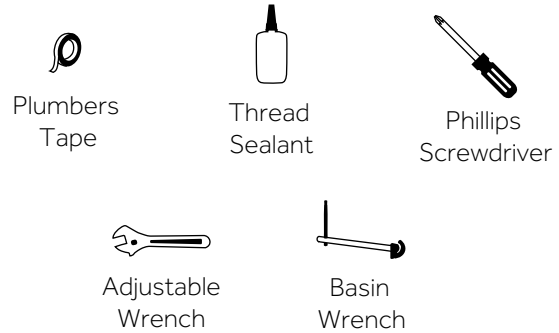
Observe all local plumbing and building codes.

Unpack and inspect the items for shipping damage. If any damage is found, contact our Customer Relations team at 1-866-855-2284.

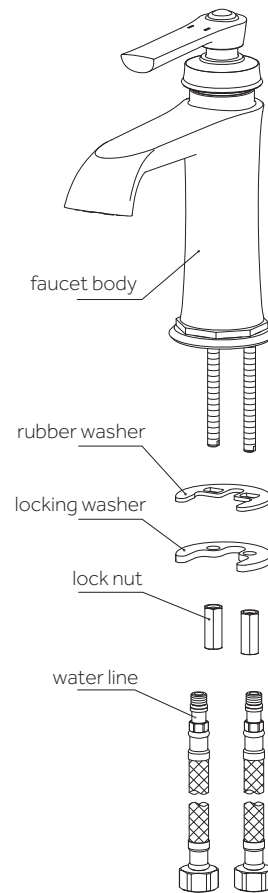
GETTING STARTED

- Ensure that you have gathered all the required materials that are needed for the installation.
- For these instructions, it is assumed that the old faucet has been completely removed and any necessary repairs or modifications to the water supply have been completed.

TOOLS AND MATERIALS:



PART IDENTIFICATION

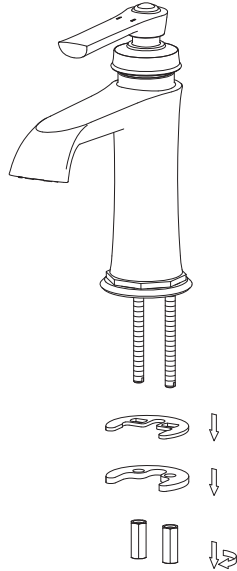




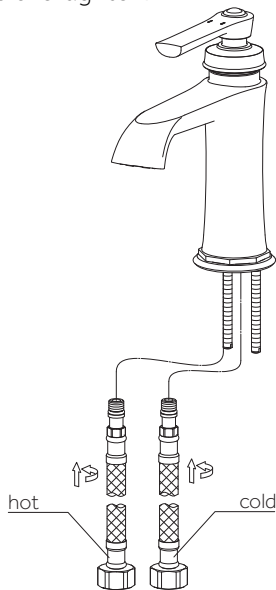
COOPER SINGLE HOLE FAUCET INSTALLATION

INSTALLATION

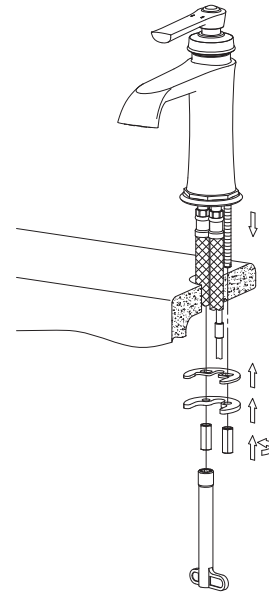
1. Remove the lock nuts, locking washer, and rubber washer from the faucet body, as shown.



2. Connect the water lines to the faucet body by threading them into the base, as shown. Ensure that the hot is on the left, and the cold is on the right. Be careful not to overtighten.



3. Insert the faucet into its prepared mounting hole. From below, slide the rubber washer and locking washer onto the faucet. Secure the faucet using the lock nuts. Tighten firmly using the provided wrench.



4. To complete installation, attach the main water lines to the valve stems. Ensure that you are connecting the hot and cold lines appropriately. Apply plumber's tape or thread sealant to the threads before tightening. Once complete, turn the faucet on and allow water to flow for approximately 60 seconds to check for any leaks.

